

### Remember in your Prayers

**Concerns:** Tim Kunert; Arlysse MacGillivray; Shawn Mahoney (son in law of John & Darlene Kelley); Merle Houdek; Karen Schein; Magnus Svenningsen (Thoreson's great-grandson); David Eberhart; Bob Loos; Francis Pflibsen; Byron Stadsvold; Lois Rink; Mark (Pat Heath's son); Jeanette Erickson, Bonnie Storlie, Marsha Dick; Connie DeLorme, Mike & Sandy Miller

**Military Concerns:** Andrew McCumber; Chris Sikich; Margaret & Catherine Maher; Clark Rose; Scot Heathman; Ryan Nordstrom; Dan & Kelly Pickett, all our service men and women serving in the Military and all of our veterans who have served.

**Missionary Partner:** Palliative Care Program at Iambi Hospital, Tanzania

**Seminary Student:** Martha Bec



## WELCOME VISITORS & WELCOME TO WORSHIP! FEBRUARY 20, 2022

*"Welcome one another, therefore, just as Christ has welcomed you, to the glory of God." Romans 15:7*

We welcome new visitors and old friends, long-time Lutherans, Christians from every tradition, and people new to faith. To those who have no church home, want to follow Christ, have doubts, do not believe, you are welcome here. Regardless of age, color, culture, sexual orientation, gender identity, socioeconomic status, marital status, abilities or challenges, join us, you are welcome here. You are welcome to worship, to celebrate and sorrow, to rejoice and recover. This is a place where lives are made new.

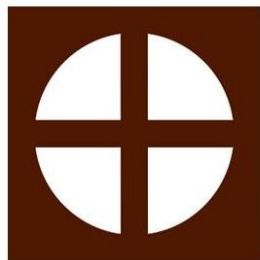
### 9:00am WORSHIP, ELW, SETTING 8

|                                     |                                      |                     |
|-------------------------------------|--------------------------------------|---------------------|
| <b>CONFESSION &amp; FORGIVENESS</b> |                                      | pg. 94              |
| <b>GATHERING SONG</b>               | <i>"Be Thou My Vision"</i>           | ELW 793             |
| <b>KYRIE</b>                        | <i>"Kyrie Eleison"</i>               | pg. 184             |
| <b>CANTICLE OF PRAISE</b>           | <i>"This is the Feast"</i>           | pg. 187-188         |
| <b>PRAYER OF THE DAY</b>            |                                      | pg. 188             |
| <b>GOSPEL ACCLAMATION</b>           | <i>"Alleluia"</i>                    | pg. 188             |
| <b>GOSPEL READING</b>               |                                      | Luke 9:18-27        |
| <b>MESSAGE</b>                      |                                      | Pastor Nikki Rockne |
| <b>HYMN OF THE DAY</b>              | <i>"If You But Trust in God..."</i>  | ELW 769             |
| <b>CREED</b>                        |                                      | pg. 105             |
| <b>PRAYERS OF INTERCESSION</b>      |                                      | pg. 189             |
| <b>PEACE</b>                        |                                      | pg. 189             |
| <b>GREAT THANKSGIVING</b>           |                                      | pg. 190             |
|                                     | <i>"Holy, Holy, Holy Lord"</i>       | pg. 190             |
| <b>LORD'S PRAYER</b>                |                                      | pg. 191             |
| <b>COMMUNION</b>                    | <i>"Lamb of God"</i>                 | pg. 191             |
| <b>BLESSING</b>                     |                                      | pg. 192             |
| <b>SENDING SONG</b>                 | <i>"Take My Life, That I May Be"</i> | ELW 583             |
| <b>DISMISSAL</b>                    |                                      | pg. 192             |

### 10:30am Virtual GIFT WORSHIP

|  |   |
|--|---|
| <b>Sunday, Feb. 20</b><br>Stewardship Intent Sunday<br>P. Ben on vacation<br>9am Virtual Worship<br>9am Worship<br>10:30am GIFT Worship<br><b>Monday, Feb. 21</b><br>P. Ben on vacation<br>1pm Sarah Circle<br>10am-12pm P. Nikki Open Door<br><b>Tuesday, Feb. 22</b><br>9am-3pm Office Open<br>10-11am P. Ben Open Door<br>2pm Office Staff Meeting<br>7pm Worship/Music<br><b>Wednesday, Feb. 23</b><br>9am-3pm Office Open<br>10am-12pm P. Nikki Open Door<br>11am P. Ben @ Text Study<br>1-3pm P. Ben Open Door<br><b>Thursday, Feb. 24</b><br>P. Nikki Day Off<br>9am-3pm Office Open<br>10:30am Bible Study<br><b>Friday, Feb. 25</b><br>P. Nikki Day Off<br>10-11am P. Ben Open Door<br><b>Saturday, Feb. 26</b> | <b>Sunday, Feb. 27</b><br>Stewardship Celebration<br>9am Virtual Worship<br>9am Worship<br>10:30am GIFT Worship<br><b>Monday, Feb. 28</b><br>P. Ben Day Off<br>10am-12pm P. Nikki Open Door<br><b>Tuesday, Mar. 1</b><br>9am-3pm Office Open<br>10-11am P. Ben Open Door<br>1pm All Staff Meeting<br>2pm Office Staff Meeting<br>7pm Media That Moves Us<br><b>Wednesday, Mar. 2</b> Ash Wednesday<br>9am-3pm Office Open<br>10-12pm P. Nikki Open Door<br>12pm Ash Wed. Worship<br>1-3pm P. Ben Open Door<br>6:30pm Ash Wed. Worship<br>7:30-8pm Drive Thru Ashes<br><b>Thursday, March 3</b><br>P. Nikki Day Off<br>9am-3pm Office Open<br>10:30am Bible Study<br>6pm Bell Choir<br>7pm Vocal Choir |
|--|---|

Go to [www.rochesterosl.org](http://www.rochesterosl.org) and click the calendar tab for all building activities.



## Our Savior's Lutheran Church

2124 Viola Rd NE  
Rochester, MN 55906  
[www.rochesterosl.org](http://www.rochesterosl.org)



Evangelical Lutheran Church in America

God's work. Our hands.

### OFFICE HOURS & CONTACT INFORMATION

The office is open Tuesday, Wednesday & Thursday, 9:00am to 3pm  
Joanne is working from home on Mondays and Fridays.

Office—289-3021; Website: [www.rochesterosl.org](http://www.rochesterosl.org)

Pastor Ben Loven—[bloven@rochesterosl.org](mailto:bloven@rochesterosl.org); cell 701-580-1559

Pastor Nikki Rockne—[pnikki@rochesterosl.org](mailto:pnikki@rochesterosl.org) cell 507-398-7710

Joanne Hamilton, Office—[office@rochesterosl.org](mailto:office@rochesterosl.org)

Greg Henderson, Director of Music—[music@rochesterosl.org](mailto:music@rochesterosl.org)

Carole Joyce, Family Ministry Consultant—[carole35@charter.net](mailto:carole35@charter.net)

Katie Zahasky, Prayer Chain—254-7894 or [ktzahasky4@gmail.com](mailto:ktzahasky4@gmail.com)

Sound Board Engineer: 9:00am Worship—Tim Pickett

Accompanist: Greg Henderson

Offering Counters: Scott & Joyce Bagne

Pastor Ben's Open Door Hours: Tue. 10-11am, Wed. 1-3pm, Fri. 10-11am

Pastor Nikki's Open Door Hours: Mon. 10am-12pm, Wed. 10am-12pm

We have set aside these times to specifically be in the office and available for conversation, but please note that meetings, visits, vacation time or pastoral emergencies may pull us away from our scheduled office hours.



**Thank you for your generosity!** Thank you so much for your continued generous financial giving to our congregation's ministry! During the pandemic, your generosity has enabled our congregation to continue witnessing to Christ's love, a message that is desperately needed in our world. We invite you to continue living into this faith-practice; you may give by placing your gift in the offering plate during in-person worship, by mailing your gift to the church building, by signing up for the automated Simply Giving program, or by going to our website. This QR code will take you directly there! Again, thank you for your generosity!



### MUSIC TO RESUME AT OSLC

Bell Choir and the Vocal Choir will resume practice on February 24.



### THURSDAY BIBLE STUDY WITH PASTOR BEN

will resume on February 24 at  
10:30am in person at OSLC.



Southeastern Minnesota Synod  
of the Evangelical Lutheran Church in America



### VOTING MEMBERS

Joanne Heathman and Jennie Loven volunteered and were appointed as Voting Members to our Southeastern Minnesota Synod Assembly, which will be held on May 7<sup>th</sup>.



### LENT "40 TOGETHER" WITH THE SOUTHEASTERN MINNESOTA SYNOD

For Lent this year, we are joining with other congregations in our synod to lift up our global ministry partners. Resources, including devotionals and other worship materials, will be shared and incorporated into our worship. We will also be joining these other congregations in raising funds to benefit our global partners. More details will be shared as we approach the season.



### SAMARITAN BETHANY'S 100<sup>TH</sup> ANNIVERSARY

Samaritan Bethany is celebrating their 100<sup>th</sup> anniversary next month. They have invited their partner congregations to join them in celebrating and to partner with them further on a building project. More details of this will be coming shortly.



## DID YOU KNOW...

**HEARING DEVICES** are available in the sound system area at the back of the Sanctuary. These devices can be used with or without a hearing aid.



**OSLC HAS A CLOSED FACEBOOK PAGE** It's a place for members and those who are active in the life of our congregation to stay up-to-date with events and activities! This is also a place for us to share life-events with our siblings in Christ. Search Our Savior's Lutheran Church, Rochester, MN and ask to join.

**LARGE PRINT BULLETINS** are available each Sunday



Simply Giving is an easy way to keep up on your giving. There are forms in the Business Center on the wall rack. They can be filled out and left in my box marked Financial Secretary in the Business Center, or you can contact me for more information.

Tim Hornseth, Financial Secretary  
507-261-4719 or  
tjhornseth@charter.net



**ANY TIME** is the perfect time to take advantage of walking in the church. 8 – figure 8 laps around equals one mile.

**ALTAR FLOWERS TODAY** are given to the glory of God from Al & Kim Pickett in honor of Karen Grant's (Mom, Grandma & Great-Grandma) birthday.



**2022 Calendar is posted. Get your favorite date/s now!**

You can sign up on the large bulletin board, email Joanne or by calling the office. Cost is \$40 and checks can be made to OSLC with Altar Flowers in the memo and can be left in the offering plate or dropped off at the office.

### FLOWER SCHEDULE

Feb. 27—OPEN      Mar. 6—OPEN      Mar. 13—Heathman

**THANK YOU FOR YOUR GENEROSITY** for SOUPer Bowl Sunday!! The youth raised and are able to send \$300 to our local Channel One! Thank you for making this possible!!

Our ELCA Youth Gathering isn't happening. You haven't seen full faces of our youth for a long time! The youth that will be participating in the summers trip have filled out a short "about me" paper about themselves and included a picture. They are posted on the doors coming into the narthex. Please take some time to learn about these youth that you are supporting. COVID has been hard for our youth in so many ways. Please continue to keep these youth (and all our youth) in your prayers.

### WOMEN'S CIRCLE

Sarah Circle will meet on Feb. 21 at 1:00pm.

**MEDIA THAT MOVES US** (1st Wednesday of each month at 7pm unless otherwise stated) We meet by Zoom or by phone link.

**NOTE CHANGE IN DATE...** March 2nd is Ash Wednesday so we are moving our meeting to **Tuesday March 1st at 7pm** for that week we will have to either meet after worship or a different date) **Dangerous Women** by Hope Adams  
Contact Pastor Nikki by phone or email for the Zoom or phone link.

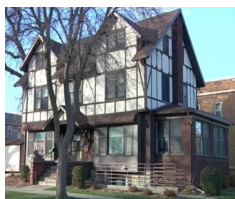




# WAYS TO GIVE

## DOROTHY DAY HOUSE

Now that we in the New Year, I wanted to ask again who might be interested in volunteering to help with the Dorothy Day house dinner that our church community has been providing for the evening meal on the third Thursday of every month. This outreach is a great way to serve those in our community who are struggling with homelessness. You can volunteer for one month or more. Please call me with your questions. Our congregation has several members who would be happy to support you in getting comfortable with our role. Thank you! Doreen Markus, [dorwm00@gmail.com](mailto:dorwm00@gmail.com), phone 507 281-1700.



## IN SEARCH OF: HOME FURNISHINGS

Couches, Tables & Chairs, Dressers, Twin Beds, Lamps, Coffee Tables and More

Catholic Charities Refugee Resettlement is in need of home furnishings to support several more Afghan and refugee families expected to arrive in Rochester in the next few weeks.

Please email a picture of your donation to [rrvolunteer@ccsomn.org](mailto:rrvolunteer@ccsomn.org). Once received, we will contact you to coordinate a drop-off time. Thank you.



**THE FELLOWSHIP MINISTRY TEAM** has set up a volunteer list through signup genius seeking church members who would be able to set up and take down the coffee for our fellowship time. All instructions are in the kitchen and the Fellowship team would be happy to orient new volunteers. Go to: <https://www.signupgenius.com/go/10C0B49AEAC29A0F94-sunday> to sign up.



## CHURCHILL/HOOVER Snack Ministry HAS Expanded

Along with our continued snack ministry for the classrooms, Hoover has reached out and asked if we could help to fill their food pantry. This pantry has easy to make items for food insecure kids to take home with them for the weekends or even week nights. The most wanted items are

- Peanut Butter/Jelly
- microwave mac & cheese
- oatmeal, microwave or stove top packets
- ramen
- rice
- cereal
- fruit cups

Please help them fill their pantry so no kids in Rochester are food insecure. Items can be left in the blue barrel along with the classroom snacks. Thank you.



Samaritan Bethany has started up their church worship services and are still looking for more volunteers to help escort residents to the church service. We previously did this as a church group two months out of the year but they are trying something different. They now have an online signup and you pick what Sunday would work for you. There are also new policies and procedures that must be followed with covid-19. All volunteers must have been vaccinated, must have a background check done and must go through a short training session. If you are interested in volunteering for this rewarding experience please contact Pam Shulze for details phone 507-281-5918 email [pks1752@charter.net](mailto:pks1752@charter.net)

## THANK YOU FOR GIVING

Thank you for your support! Your generous support of 200.00 is truly appreciated and is put to work engaging young people in the fun, adventure and life changing experiences of Scouting. **Franklin B. Sears**, Scout Executive

Dear OSLC, Thank you for your contribution of 575.00 to Lutheran Social Services. LSS impacts 1 in every 65 Minnesotans. With Gratitude, Jesse M. Stremcha, VP & Chief of Development