

Remember in your Prayers

Concerns: Maxine Thoreson; Tim Kunert; Arlysse MacGillivray; Shawn Mahoney (son in law of John & Darlene Kelley); Merle Houdek; Karen Schein; Magnus Svennungsen (Thoreson's great-grandson); David Eberhart; Bob Loos; Francis Pflibsen; Byron Stads vold; Lois Rink; Mark (Pat Heath's son); Jeanette Erickson, Bonnie Storlie, Marsha Dick; Connie DeLorme, Mike & Sandy Miller

Those Mourning: Pastor Nikki & family and Bill & Jackie Rohe upon on the death of sister and aunt, Barbara Buck.

Military Concerns: Andrew McCumber; Chris Sikich; Margaret & Catherine Maher; Clark Rose; Scot Heathman; Ryan Nordstrom; Dan & Kelly Pickett, all our service men and women serving in the Military and all of our veterans who have served.

Missionary Partner: Palliative Care Program at Iambi Hospital, Tanzania



WELCOME VISITORS & WELCOME TO WORSHIP! FEBRUARY 27, 2022

"Welcome one another, therefore, just as Christ has welcomed you, to the glory of God." Romans 15:7

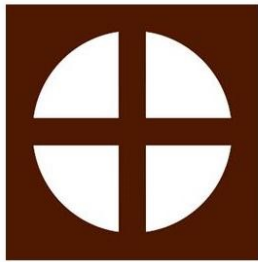
We welcome new visitors and old friends, long-time Lutherans, Christians from every tradition, and people new to faith. To those who have no church home, want to follow Christ, have doubts, do not believe, you are welcome here. Regardless of age, color, culture, sexual orientation, gender identity, socioeconomic status, marital status, abilities or challenges, join us, you are welcome here. You are welcome to worship, to celebrate and sorrow, to rejoice and recover. This is a place where lives are made new.

9:00am WORSHIP, ELW, SETTING 8

Sunday, Feb. 27	5pm Derby Set-up
Stewardship Celebration	Saturday, March 5
9am Virtual Worship	10am Pinewood Derby
9am Worship	Sunday, March 6
10:30am GIFT Worship	9am Virtual Worship
Monday, Feb. 28	9am Worship at OSLC
P. Ben Day Off	10:30am GIFT Worship
10am-12pm P. Nikki Open Door	Monday, March 7
Tuesday, Mar. 1	P. Ben Day Off
9am-3pm Office Open	10-12pm P. Nikki Open Door
10-11am P. Ben Open Door	Tuesday, March 8
1pm All Staff Meeting	9am-3pm Office Open
2pm Office Staff Meeting	9:30am Pastor's at Conference Meeting
7pm Media That Moves Us	2pm Office Staff Meeting
Wednesday, Mar. 2 Ash Wednesday	6:30pm Business/Finance
9am-3pm Office Open	Wednesday, March 9
10-12pm P. Nikki Open Door	9am-3pm Office Open
12pm Ash Wed. Worship	9:30am Priscilla Circle
1-3pm P. Ben Open Door	10-12pm P. Nikki Open Door
6:30pm Ash Wed. Worship	1-3pm P. Ben Open Door
7:30-8pm Drive Thru Ashes	7pm Leadership
Thursday, March 3	
P. Nikki Day Off	
9am-3pm Office Open	
10:30am Bible Study	Go to www.rochesterosl.org and click the
6pm Bell Choir	calendar tab for all building activities.
7pm Vocal Choir	
Friday, March 4	
P. Nikki Day Off	
10-11am P. Ben Open Door	

CONFESSION & FORGIVENESS	pg. 94
GATHERING SONG "How Good, Lord, to Be Here!"	ELW 315
KYRIE "Kyrie Eleison"	pg. 184
CANTICLE OF PRAISE "This is the Feast"	pg. 187-188
PRAYER OF THE DAY	pg. 188
GOSPEL ACCLAMATION "Alleluia"	pg. 188
GOSPEL READING	Luke 9 28-50
MESSAGE	Pastor Ben Loven
HYMN OF THE DAY "Shine, Jesus, Shine"	ELW 671
CREED	pg. 105
PRAYERS OF INTERCESSION	pg. 189
PEACE	pg. 189
GREAT THANKSGIVING	pg. 190
	"Holy, Holy, Holy Lord"
LORD'S PRAYER	pg. 191
COMMUNION "Lamb of God"	pg. 191
BLESSING	pg. 192
SENDING SONG "When in Our Music God is Glorified"	ELW 851
DISMISSAL	pg. 192

10:30am Virtual GIFT WORSHIP



Our Savior's Lutheran Church

2124 Viola Rd NE
Rochester, MN 55906
www.rochesteroslsc.org



Evangelical Lutheran Church in America

God's work. Our hands.

OFFICE HOURS & CONTACT INFORMATION

The office is open Tuesday, Wednesday & Thursday, 9:00am to 3pm
Joanne is working from home on Mondays and Fridays.

Office—289-3021; **Website:** www.rochesteroslsc.org

Pastor Ben Loven—bloven@rochesteroslsc.org; cell 701-580-1559

Pastor Nikki Rockne—pnikki@rochesteroslsc.org cell 507-398-7710

Joanne Hamilton, Office—office@rochesteroslsc.org

Greg Henderson, Director of Music—music@rochesteroslsc.org

Carole Joyce, Family Ministry Consultant—carole35@charter.net

Katie Zahasky, Prayer Chain—254-7894 or ktzahasky4@gmail.com

Sound Board Engineer: 9:00am Worship—Bob Westland

Accompanist: Greg Henderson **Special Music:** Vocal Choir

"Lux Chrsi, Shine on Us" arr. Wilmington

Offering Counters: Kevin & Cindy Norgard

Pastor Ben's Open Door Hours: Tue. 10-11am, Wed. 1-3pm, Fri. 10-11am

Pastor Nikki's Open Door Hours: Mon. 10am-12pm, Wed. 4pm-6pm

We have set aside these times to specifically be in the office and available for conversation, but please note that meetings, visits, vacation time or pastoral emergencies may pull us away from our scheduled office hours.



Thank you for your generosity! Thank you so much for your continued generous financial giving to our congregation's ministry! During the pandemic, your generosity has enabled our congregation to continue witnessing to Christ's love, a message that is desperately needed in our world. We invite you to continue living into this faith-practice; you may give by placing your gift in the offering plate during in-person worship, by mailing your gift to the church building, by signing up for the automated Simply Giving program, or by going to our website. This QR code will take you directly there! Again, thank you for your generosity!

Ash Wednesday 2022 Wednesday, March 2

Worship: 12pm & 6:30pm
Drive Thru Ashes 7:30-8pm



Worship Music

MUSIC AT OSLC

Rehearsals on Thursdays

Bell Choir—6:00pm

Vocal Choir—7:00pm

SAMARITAN BETHANY'S 100TH ANNIVERSARY

April 7, 2022—Mayo Civic Center

5:15pm Reception

6:30pm Dinner

7:30pm Divas of the Decades

\$100/person

Register online at

samaritanbethany.com or

email Rita at

rhawkins@samaritanbethany.com



LENT "40 TOGETHER" WITH THE SOUTHEASTERN MINNESOTA SYNOD

For Lent this year, we are joining with other congregations in our synod to lift up our global ministry partners. Resources, including devotionals and other worship materials, will be shared and incorporated into our worship. We will also be joining these other congregations in raising funds to benefit our global partners. More details will be shared soon.



Lent is right around the corner! Beginning on March 2 with Ash Wednesday, the season will last for 40 days (not counting Sundays).

This year, our special focus will be on following Jesus. We know that, at the end of these 40 days, Jesus' journey will take him to the cross, where he will shock the world with how far he is willing to go in forgiveness and love.

We, as Jesus' disciples today, seek to follow him on this path, knowing that we will not do so perfectly, yet knowing that it is our calling. We seek to follow Jesus on the way, a way that will lead us to new acts of service and love on behalf of the world.

Our Sunday worship services this year, both in-building and online, have been crafted to highlight this special focus.

Additionally, like we have done in the past, we will be holding midweek services on Wednesdays. These services will begin at 6:15 PM with a hymn sing in our sanctuary. However, *unlike* we have done in the past, these services are not going to be *only* in-building; at 6:30PM we will go live on YouTube!

The Midweek services themselves will also be different than we've done in the past; they will be an online and in-person conversation! Each Sunday, we will post a topic or a question. From then until Wednesday, we encourage you to think about the topic/question, and then address it in some way. It could be that you're scrolling on Facebook and you see a post that you think addresses it really well – send the post to us! Or it could be that you're out on a walk and you see a beautiful sunset, and that sunset helps you make sense of the topic/question – snap a picture and send it to us with a little explanation! The sky is the limit for your inspiration!

During worship on Wednesday, the pastors will curate those posts and lead us in a discussion, both online and in-person.

Please join us this Lent as we journey on the way, following Jesus our Savior, as he takes us down paths we never anticipated!

ALTAR FLOWERS TODAY are given to the glory of God from Joanne Hamilton in honor of Bev Gronvold for all she does for me in the office and more.



2022 Calendar is posted. Get your favorite date/s now!

You can sign up on the large bulletin board, email Joanne or by calling the office. Cost is \$40 and checks can be made to OSLC with Altar Flowers in the memo and can be left in the offering plate or dropped off at the office.

FLOWER SCHEDULE

Mar. 6—OPEN

Mar. 13—Heathman

Mar. 20—Schroeder

MEDIA THAT MOVES US (1st Wednesday of each month at 7pm unless otherwise stated) We meet by Zoom or by phone link.



NOTE CHANGE IN DATE...March 2nd is Ash Wednesday so we are moving our meeting to **Tuesday March 1st at 7pm** for that week we will have to either meet after worship or a different date) **Dangerous Women** by Hope Adams
Contact Pastor Nikki by phone or email for the Zoom or phone link.



THANK YOU for your generous gift of 2,313.00 to Luther Seminary. We are all deeply grateful for your generosity! **Dan Sassenberg, Director of Advancement Services**

CIRCLE BIBLE STUDY IN MARCH

Priscilla Circle—March 9, 9:30am at OSLC

Bible Study Leader: Julie Mullen

Naomi Circle—March 14. 9:00am at OSLC

Bible Study Leader: Jan Vilen

Sarah Circle—March 21 at 1:00pm

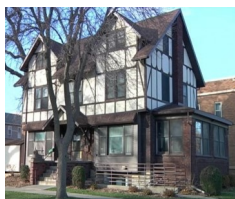


Circle Groups

WAYS TO GIVE

DOROTHY DAY HOUSE

Now that we in the New Year, I wanted to ask again who might be interested in volunteering to help with the Dorothy Day house dinner that our church community has been providing for the evening meal on the third Thursday of every month. This outreach is a great way to serve those in our community who are struggling with homelessness. You can volunteer for one month or more. Please call me with your questions. Our congregation has several members who would be happy to support you in getting comfortable with our role. Thank you! Doreen Markus, dorwm00@gmail.com, phone 507 281-1700.



IN SEARCH OF: HOME FURNISHINGS

Couches, Tables & Chairs, Dressers, Twin Beds, Lamps, Coffee Tables and More

Catholic Charities Refugee Resettlement is in need of home furnishings to support several more Afghan and refugee families expected to arrive in Rochester in the next few weeks.

Please email a picture of your donation to rrvolunteer@ccsomn.org. Once received, we will contact you to coordinate a drop-off time. Thank you.



THE FELLOWSHIP MINISTRY TEAM has set up a volunteer list through signup genius seeking church members who would be able to set up and take down the coffee for our fellowship time. All instructions are in the kitchen and the Fellowship team would be happy to orient new volunteers. Go to: <https://www.signupgenius.com/go/10C0B49AEAC29A0F94-sunday> to sign up.



CHURCHILL/HOOVER Snack Ministry HAS Expanded

Along with our continued snack ministry for the classrooms, Hoover has reached out and asked if we could help to fill their food pantry. This pantry has easy to make items for food insecure kids to take home with them for the weekends or even week nights. The most wanted items are

- Peanut Butter/Jelly
- microwave mac & cheese
- oatmeal, microwave or stove top packets
- ramen
- rice
- cereal
- fruit cups

Please help them fill their pantry so no kids in Rochester are food insecure. Items can be left in the blue barrel along with the classroom snacks. Thank you.



Samaritan Bethany has started up their church worship services and are still looking for more volunteers to help escort residents to the church service. We previously did this as a church group two months out of the year but they are trying something different. They now have an online signup and you pick what Sunday would work for you. There are also new policies and procedures that must be followed with covid-19. All volunteers must have been vaccinated, must have a background check done and must go through a short training session. If you are interested in volunteering for this rewarding experience please contact Pam Shulze for details phone 507-281-5918 email pks1752@charter.net

