

Remember in your Prayers

Member Concerns: George Meyer; Sandra Pederson; Maxine Thoreson; Tim Kunert; Arlysse MacGillivray; Merle Houdek; Karen Schlein; Bob & Joan Loos; Francis Pflibsen; Byron Stadsvold; Lois Rink; Jeanette Erickson, Bonnie Storlie, Marsha Dick; Connie DeLorme, Mike & Sandy Miller

Non-Member Friends/Family Concerns: Bob (Bill Nicklay’s brother); Dan (Gladys Jensen’s son) Duane (Renita Miller’s brother); Lila (friend of Wayne Servais); Brian Howe (nephew of Larry & Marti Howe); Shawn Mahoney (son in law of John & Darlene Kelley); Magnus Svenningsen (Thoreson's great-grandson)

Military Concerns: Andrew McCumber; Chris Sikich; Margaret & Catherine Maher; Clark Rose; Ryan Nordstrom; Dan & Kelly Pickett, all our service men and women serving in the Military and all of our veterans who have served.

Global Ministry: Palliative Care Program at Iambi Hospital, Tanzania

Seminary Student: Martha Bec

Sunday, July 31 9am Virtual Worship 9am Outdoor Worship	Friday, August 5 P. Nikki on vacation
Monday, August 1 P Ben -off	Saturday, August 6 P Nikki on vacation
Tuesday, August 2 9am-3pm Office open 11 am P. Nikki at Text Study 1 pm All Staff Meeting 2 pm Office staff meeting	Sunday, August 7 P Nikki on vacation 9 am Virtual Worship 9 am Worship 1 pm P. Ben leaves for Assembly
Wednesday, August 3 P. Nikki on vacation 9am-3pm Office Open	
Thursday, August 4 P. Nikki on vacation 9am-3pm Office Open	

Our office doors are always open for visits/conversations. Please make a call to the church office before visiting if you would like to specifically visit with one of us to ensure we are in.
Pastor Ben & Pastor Nikki



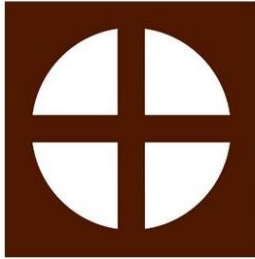
OSLC WEEKLY
WELCOME VISITORS & WELCOME TO WORSHIP!
JULY 31, 2022

"Welcome one another, therefore, just as Christ has welcomed you, to the glory of God." Romans 15:7
We welcome new visitors and old friends, long-time Lutherans, Christians from every tradition, and people new to faith. To those who have no church home, want to follow Christ, have doubts, do not believe, you are welcome here. Regardless of age, color, culture, sexual orientation, gender identity, socioeconomic status, marital status, abilities or challenges, join us, you are welcome here. You are welcome to worship, to celebrate and sorrow, to rejoice and recover. This is a place where lives are made new.

SUMMER WORSHIP, 9:00AM		
GATHERING SONG	<i>"You Are Holy" (sing twice)</i>	ELW 525
GOSPEL READING		John 11:17-27
PROCLAMATION OF THE GOOD NEWS		Pastor Ben Loven
HYMN OF THE DAY	<i>"Lord , I Lift Your Name On High" (sing twice)</i>	ELW 857
COMMUNION SONG	<i>"Loaves Were Broken, Words Were Spoken"</i>	ACS 966 pg.6 of Weekly
SENDING SONG	<i>"Go to the World"</i>	ACS 991 pg. 4 of Weekly

Time after Pentecost (Ordinary Time)

The season after Pentecost is a time of discipleship. This means that it is a time of learning and following. Through the stories of Jesus’ life, we learn about God’s priorities and passions, and we are encouraged by God to follow the path on which Jesus leads us.



Our Savior's Lutheran Church

2124 Viola Rd NE
Rochester, MN 55906
www.rocheesterslc.org



Evangelical Lutheran Church in America

God's work. Our hands.

OFFICE HOURS & CONTACT INFORMATION

The office is open Tuesday, Wednesday & Thursday, 9:00am to 3pm
Joanne is working from home on Mondays and Fridays, available by email.

Office—289-3021; Website: www.rocheesterslc.org

Pastor Ben Loven—bloven@rocheesterslc.org; cell 701-580-1559

Pastor Nikki Rockne—pnikki@rocheesterslc.org cell 507-398-7710

Our office doors are always open for visits/conversations. Please make a call to the church office before visiting if you would like to specifically visit with one of us to ensure we are in.

Pastor Ben & Pastor Nikki

Joanne Hamilton, Office—office@rocheesterslc.org

Greg Henderson, Director of Music—music@rocheesterslc.org

Carole Joyce, Family Ministry Consultant—carole35@charter.net

Katie Zahasky, Prayer Chain—254-7894 or ktzahasky4@gmail.com

WORSHIP ASSISTANTS

Organist/Pianist: Greg Henderson

Sound Board Engineer: 9:00am Worship—Bev Gronvold

Offering Counters: Bruce & Tammy Olson

Ushers: 9:00am Worship—Bruce & Tammy Olson

Communion Assistants: Katie Zahasky & Altar Guild Members: Carol Houdek, Bill Nicklay



Scan the QR code for easy giving.

CONGREGATIONAL COLLECTION JUNE/JULY

School Kits

You can make 1 complete set or just buy individual items.

Each kit contains:

- 4-70 sheet notebooks of wide or college rule paper (no loose paper)
- 1-30 centimeter ruler, or a ruler with inches & centimeter
- 1 pencil sharpener
- 1 blunt scissors
- 5-ball point pens (no gel ink)
- 1-16 or 24 count box of crayons
- Erasers, 2 1/2 in size



Items can be left in the basket provided in the Narthex.



August 15 1 PM Women's Bible Study

Come join us for the Summer Joint Bible study using the concept of quilting to explore rest, renewal and Christian community. Everyone is welcome to attend.

Session one: A summer of rest and renewal focuses on choosing patterns and reassessing the shape of our lives.

Session two: Quilt cutting and piecing explores how our lives and Christian community come together into a cohesive whole.

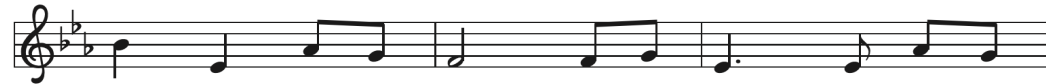
Session three: Ties that bind examines how God invites us to commit to a new way of life with God and with each other.

We will study Sessions two and three. If you would like a copy of any of the sessions, please call Mary Ann (287-8144) or e-mail (attsm@charter.net) to let her know. We would invite all of you to please read the two sessions so we can have a great discussion and hear your stories. We would also like you to pick a quilt or other project you have done or have been given to talk about the “story” behind this project or gift. A picture of the item would also be great.

Loaves Were Broken, Words Were Spoken



1 Loaves were bro - ken, words were spo - ken by the
 2 Loaves were bro - ken, words were spo - ken in a
 3 Loaves are bro - ken, words are spo - ken, as in
 4 By the loaves you break and give us, send us



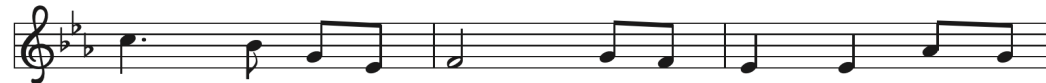
Gal - i - le - an shore. Je - sus, Bread of life from
 qui - et room one night. In the bread and wine you
 faith we gath - er here. Je - sus speaks a - cross the
 in your name to share bread for which the mil - lions



heav - en, was their food for - ev - er - more.
 gave them, Christ, you came as Light from Light.
 a - ges: "I am with you; do not fear!"
 hun - ger, words that tell your love and care.



Refrain
 By your bod - y bro - ken for us, by your



wine of life out - poured, Je - sus, feed a - gain your



peo - ple. Be our Host, our Life, our Lord.

Text: Herman G. Stuempfle Jr., 1923–2007
 Music: JOYOUS LIGHT, Marty Haugen, b. 1950
 Text © 2006 GIA Publications, Inc., giamusic.com. All rights reserved.
 Music © 1987 GIA Publications, Inc., giamusic.com. All rights reserved.

Duplication in any form prohibited without securing permission from copyright administrator or reporting usage under valid license.

VOLUNTEER OPPORTUNITIES



NEW

The OSLC Property Team is looking for a small group of volunteers to help with landscaping needs through the summer months. If you are willing to help out, please contact Megan Valen at 507-951-0664 or Joanne in the church office 507-289-3021.



DOROTHY DAY HOUSE DINNER

Third Thursday of every month.

This outreach is a great way to serve those in our community who are struggling with homelessness. You can volunteer for one month or more. Please call me with your questions. Our congregation has several members who would be happy to support you in getting comfortable with our role. Thank you! Doreen Markus, dorwm00@gmail.com, phone 507 281-1700.



A Life Care Community

WORSHIP ASSISTANCE NEEDED at SAMARITAN BETHANY

Can you help residents to and from worship?

Online signup available There are also new policies

and procedures that must be followed with covid-19. All volunteers must have been vaccinated, must have a background check done and must go through a short training session. If you are interested in volunteering for this rewarding experience please contact Pam Shulze for details
 phone 507-281-5918
 email pk1752@charter.net



THE QUILTING GROUP meets on 3rd Tuesday of each month in the OSLC Fellowship Hall. Everyone is welcome to join. No sewing skills necessary.

Go to the World!



1 Go to the world! Go in - to all the earth.
2 Go to the world! Go in - to ev - 'ry place.
3 Go to the world! Go strug - gle, bless, and pray;
4 "Go to the world! Go as the ones I send,



Go preach the cross where Christ re - news life's worth,
Go live the word of God's re - deem - ing grace.
the nights of tears give way to joy - ous day.
for I am with you till the age shall end,



bap - tiz - ing as the sign of our re - birth.
Go seek God's pres - ence in each time and space.
As ser - vant church, you fol - low Christ's own way.
when all the hosts of glo - ry cry, A - men!"



Al - le - lu - ia. Al - le - lu - ia.

Text: Sylvia G. Dunstan, 1955–1993
Music: SINE NOMINE, Ralph Vaughan Williams, 1872–1958
Text © 1991 GIA Publications, Inc., giamusic.com. All rights reserved.
Music © Oxford University Press. All rights reserved.

Duplication in any form prohibited without securing permission from copyright administrator or reporting usage under valid license.

We are discontinuing the collection of pop tabs (can be saved at home and brought in when we are collecting for the Ronald McDonald House), milk caps, used cells phone, printer cartridges & eye glasses. The cost of shipping has gotten to great to continue.



Community Band

Love music and have an instrument you could/ would like to play? Consider joining Stewartville Community Band. No auditions or fees. Practices 7-8:30 pm on Tuesdays (May -October) at St. John’s Lutheran in Stewartville(school closed for summer renovation). The band plays local parades (rides a wagon), concerts , special events. A variety of pop, classic, patriotic, marches, family friendly music. Come join the fun. Questions contact Bev @ 282-0815 or email bgronvold@charter.net Please share with family and friends who might be interested. New members always welcome!

Simply Giving is an easy way to keep up on your giving. There are forms in the Business Center on the wall rack. They can be filled out and left in my box marked Financial Secretary in the Business Center, or you can contact me for more information.



Tim Hornseth, Financial Secretary
507-261-4719 or tjhornseth@charter.net

THANK YOU

Together, we are neighbors helping neighbors. Thank you for your generous gift of \$500.00 received on 7/7/2022 to support the services of of Lutheran Social Services of Minnesota (LSS).