

### Remember in your Prayers

**Member Concerns:** Larry Howe; George Meyer; Sandra Pederson; Maxine Thoreson; Arlysse MacGillivray; Merle Houdek; Karen Schlein; Bob & Joan Loos; Francis Pflibsen; Byron Stadsvold; Lois Rink; Jeanette Erickson, Bonnie Storlie, Marsha Dick; Connie DeLorme, Mike & Sandy Miller

**Non-Member Friends/Family Concerns:** Bob (Bill Nicklay's brother); Dan (Gladys Jensen's son) Duane (Renita Miller's brother); Lila (friend of Wayne Servais); Brian Howe (nephew of Larry & Marti Howe); Shawn Mahoney (son in law of John & Darlene Kelley); Magnus Svenningsen (Thoreson's great-grandson)

**Military Concerns:** Andrew McCumber; Chris Sikich; Margaret & Catherine Maher; Clark Rose; Ryan Nordstrom; Dan & Kelly Pickett, all our service men and women serving in the Military and all of our veterans who have served.

**Global Ministry:** Palliative Care Program at Iambi Hospital, Tanzania



## OSLC WEEKLY

### WELCOME VISITORS & WELCOME TO WORSHIP!

August 28, 2022

*"Welcome one another, therefore, just as Christ has welcomed you, to the glory of God." Romans 15:7*

We welcome new visitors and old friends, long-time Lutherans, Christians from every tradition, and people new to faith. To those who have no church home, want to follow Christ, have doubts, do not believe, you are welcome here. Regardless of age, color, culture, sexual orientation, gender identity, socioeconomic status, marital status, abilities or challenges, join us, you are welcome here. You are welcome to worship, to celebrate and sorrow, to rejoice and recover. This is a place where lives are made new.

### SUMMER WORSHIP, 9:00AM

**GATHERING SONG** *"Look Who Gathers at Christ's Table"* ACS 977, pg. 2 of Weekly

**GOSPEL READING** Luke 14:1, 7-14

**PROCLAMATION OF THE GOOD NEWS** Pastor Nikki Rockne

**HYMN OF THE DAY** *"Let Us Go Now to the Banquet"* ELW 523

**COMMUNION SONG** *"Now We Join in Celebration"* ELW 462

**SENDING SONG** *"The Lord Now Sends Us Forth"* ELW 538

<b>Sunday, August 28</b> 9am Virtual Worship 9am Worship—Outdoors	<b>Sunday, September 4</b> 9am Virtual Worship 9am Worship	<b>Friday, September 9</b> P. Nikki Day Off
<b>Monday, August 29</b> P. Ben Day Off	<b>Monday, September 5</b> P. Ben Day Off	<b>Saturday, September 10</b>
<b>Tuesday, August 30</b> 9am-3pm Office Open 11am P. Nikki @ Text Study 2pm Office Staff Meeting	<b>Tuesday, September 6</b> 9am-3pm Office Open 11am P. Nikki @ Text Study 1pm All Staff Meeting 2pm Office Staff Meeting	<b>Sunday, September 11</b> <b>Rally Day!!!</b> God's Work, Our Hands 9am Virtual Worship 9am Worship 10am Service Projects 11:30am Boxed Lunch
<b>Wednesday, August 31</b> 9am-3pm Office Open	<b>Wednesday, September 7</b> 9am-3pm Office Open 11am P. Ben at Text Study 7pm Media That Moves Us	Our office doors are always open for visits/conversations. Please make a call to the church office before visiting if you would like to specifically visit with one of us to ensure we are in. <b>Pastor Ben &amp; Pastor Nikki</b>
<b>Thursday, September 1</b> P. Nikki Day Off 9am-3pm Office Open 6pm Bell Choir 7pm Vocal Choir	<b>Thursday, September 8</b> P. Nikki Day Off 9am-3pm Office Open 9:15am Faithfully Fit 6pm Bell Choir 7pm Vocal Choir	
<b>Friday, September 2</b> P. Nikki Day Off		
<b>Saturday, September 3</b>		

## Time after Pentecost (Ordinary Time)

The season after Pentecost is a time of discipleship. This means that it is a time of learning and following. Through the stories of Jesus' life, we learn about God's priorities and passions, and we are encouraged by God to follow the path on which Jesus leads us.

Look Who Gathers at Christ’s Table

Musical score with lyrics for 'Look Who Gathers at Christ's Table'. The lyrics are: 1 Look who gath - ers at Christ's ta - ble! Hear the sto - ries 2 Clouds of light sur - round the ta - ble; an - cient fol - low - 3 Their sad sto - ries are re - peat - ed in a thou - sand 4 Bring your joy and bring your sad - ness, and pre - pare to that they bring. Some are weep - ing; some are laugh - ing; ers ap - pear, saints con - fess - ing how they wres - tled dif - f'rent ways, but they share one thing in com - mon: be sur - prised by the host whose hands are wound - ed, some have songs they want to sing. Oth - ers ask why they're in - with their guilt, their doubt and fear. Pe - ter tells of his de - they all end in thanks and praise for the host who has in - who will o - pen wide your eyes when he bless - es bread and vit - ed, bur - dened by the wrong they've done. Christ in - sists they ny - ing Christ was ev - er in his sight; Paul re - lates his vit - ed north and south and east and west to con - verge a - breaks it— truth and man - na from a - bove!— and then pass - es all are wel - come. There is room for ev - 'ry - one. fruit - less ef - forts to ob - lit - er - ate the light. round this ta - ble, where all life is fed and blest. wine that wa - kens in your heart the taste of love.

Text: Thomas H. Troeger, b. 1945  
Music: COPELAND, Michael Corzine, b. 1947  
Text © 2002 Oxford University Press. All rights reserved.  
Music © 2000 Michael Corzine, admin. Augsburg Fortress

Duplication in any form prohibited without securing permission from copyright administrator or reporting usage under valid license.

CONGREGATIONAL COLLECTION for SEPTEMBER

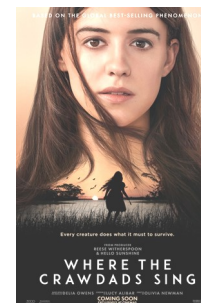
Hope Lodge

Please bring all items to the basket provided in the Narthex. Thank you.

- \*\*Towels & bedding
- \*\*Laundry supplies
- \*\*Office supplies
- \*\*Cleaning supplies
- \*\*Paper products
- \*\*Gift certificates (gas cards-Target-Hy-Vee)
- \*\*Puzzles, board games, CDS
- \*\*Greeting cards
- \*\*Night lights
- \*\*Grocery & Kitchen supplies.

MEDIA THAT MOVES US

We will meet on September 7th.  
I will follow up with more details as it gets closer.  
I will aim for a start time between 6pm-7:30pm. We can meet at the theater.  
Pray "Where The Crawdads Sing" is still in theaters.  
If you want to join in and are not on my media email list, please contact me.  
Nikki

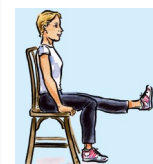


YOU'RE INVITED...

Stewartville Community Band extends a special concert invitation to the following congregations for their support of the band by letting us use their facilities for rehearsals, storage, and some equipment; St. John's Lutheran, Stewartville; Zion Lutheran, Stewartville; Our Savior's Lutheran, Rochester.



Sunday, Sept. 25, 3 pm at Zion Lutheran Church, Stewartville  
Free concert -Donations welcome—Refreshments served



FAITHFULLY FIT TO RESUME

The Thursday morning exercise group will begin to meet again on September 8 at 9:15am in the Narthex. Join us for light exercise and joyful conversation.  
Everyone is welcome to join in the fun.

***"Sing to him a new song; play skillfully, and shout for joy."--Psalm 33:3***

**Worshipping Arts**  
Starting This fall Sunday Sept. 18th.

We understand that GIFT was not working as well as we wished it to, and we then re-imagined our Sunday mornings.

**After 1st service and before 2nd service (10:10-10:35) we have created is a time geared for the young families to gather.** Each Sunday we will be exploring our faith by singing, with instruments, crafts, or activities.

- Our music director Greg Henderson will lead one Sunday **worshipping with our voices in song.**
  - Our bell choir director Bev Gronvold will lead one Sunday **exploring how to worship with instruments.**
  - One Sunday we will **explore our gospel lesson with crafts.**
  - One Sunday we will **explore our gospel lesson with an activity.**
- This will be geared for the young and their family, but all may join in the fun!



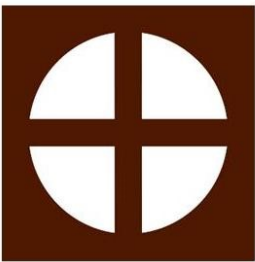
**A new way to worship for our second service starting at 10:45am.**  
What will it look like?

- Interactive
- Different
- Lutheran Liturgy led
- Exploring the Gospel story in a new way.

Let us worship with you this fall in a new way.



*"Sing to the Lord a new song. God has done marvelous things. I too sing praises with a new song." Earth And All Stars ELW 731*



**Our Savior's Lutheran Church**

2124 Viola Rd NE  
Rochester, MN 55906  
[www.rocheesterslc.org](http://www.rocheesterslc.org)



**Evangelical Lutheran Church in America**  
God's work. Our hands.

**OFFICE HOURS & CONTACT INFORMATION**

The office is open Tuesday, Wednesday & Thursday, 9:00am to 3pm  
Joanne is working from home on Mondays and Fridays, available by email.

Office—289-3021; Website: [www.rocheesterslc.org](http://www.rocheesterslc.org)  
Pastor Ben Loven—[bloven@rocheesterslc.org](mailto:bloven@rocheesterslc.org); cell 701-580-1559  
Pastor Nikki Rockne—[pnikki@rocheesterslc.org](mailto:pnikki@rocheesterslc.org) cell 507-398-7710

Our office doors are always open for visits/conversations. Please make a call to the church office before visiting if you would like to specifically visit with one of us to ensure we are in.  
**Pastor Ben & Pastor Nikki**

Joanne Hamilton, Office—[office@rocheesterslc.org](mailto:office@rocheesterslc.org)  
Greg Henderson, Director of Music—[music@rocheesterslc.org](mailto:music@rocheesterslc.org)  
Carole Joyce, Family Ministry Consultant—[carole35@charter.net](mailto:carole35@charter.net)  
Katie Zahasky, Prayer Chain—254-7894 or [ktzahasky4@gmail.com](mailto:ktzahasky4@gmail.com)

**WORSHIP ASSISTANTS**

Organist/Pianist: Greg Henderson  
Sound Board Engineer: 9:00am Worship—Tim Pickett  
Offering Counters: Scott Moon & Tim Pickett  
Ushers: 9:00am Worship—Tim & Megan Valen  
Communion Assistants: Liz Harwick  
Altar Guild Member: Joanne Heathman



Scan the QR code for easy giving.



**DONATIONS NEEDED FOR RALLY SUNDAY, SEPTEMBER 11**

For our God's Work our Hands Sunday Sept. 11th we are looking for donations.

We would be looking for the following:

Socks, Kleenex (small packs), Granola Bars, Toothpaste (small), Toothbrush (travel size), soaps (hotel), rain poncho, disinfecting wipes (small pack), and greeting cards without a message (blank on the inside).

Please have them here by Sept. 11th.

Thank You so much!

**MARK YOUR CALENDARS...OSLC MUSIC TO BEGIN!!**

**Orchestra** begins Sunday, August 28 at 10am

**Bell Choir** begins Thursday, September 1 at 6pm

**Vocal Choir** begins Thursday, September 1 at 7pm

If you have any questions regarding music here at OSLC, contact our Director of Music, Greg Henderson at [music@rochesterosl.org](mailto:music@rochesterosl.org) or 505-975-1425



The SE MN Synodical Women's Convention will be held September 17 @ Bethel Lutheran Church here in Rochester. The theme is Love One Another. Registration fee is \$25 due by August 29<sup>th</sup>. The signup sheet and agenda is posted on the WELCA bulletin. Please make out the check to OSLC Women and place in the WELCA locked mail box. Jean will send one check to the treasurer.

Please note there is also a love offering to be made to the Safe Haven Shelter. The list of items is posted on the kiosk in the Narthex and items can be placed in the box underneath. Any congregational member can also contribute.

**BIBLE STUDY**

**Naomi Circle**—Sept. 12, 9am

**Priscilla Circle**—Sept. 14, 9:30am at OSLC; Hostess: Ardie O'Hanlon; Bible Study: Group

**Martha Circle**—Sept. 14, 9:30am

**Sarah Circle**—Sept. 19, 1pm

**Rally Sunday – God's Work, Our Hands Sunday**

On September 11<sup>th</sup>, we will celebrate Rally Sunday, the traditional kickoff to our Fall programming. This year, however, we will be participating in the ELCA's long-running day of service "God's Work, Our Hands Sunday," which also falls on that day.

We decided to move in this direction because devoting our congregation's energies to serving our community feels like the right way to commemorate 9/11.

The schedule for the day is:

- 9AM Worship
- 10AM Service Projects
- 11:30AM Box lunches

There will be a variety of service projects that you can choose from:

- In the building:
  - Packing kits for people who are unhoused
  - Decorating cards for residents of Samaritan Bethany
- Out of the building:
  - Doing projects at Quarry Hill

**Parish Fellowship will be serving a boxed lunch following the "Out of the Building Work at Quarry Hill" or our "In the Building Work packing kits for people who are unhoused or decorating cards for the residents of Samaritan Bethany" at 11:30 on Sunday, September 11. We would love it if you would join us; please RSVP by Monday, September 5 to the church office so we may be ready to serve you and your family.**

We hope that you will participate in this day of service, and that you'll invite others to join in!

