

Remember in your Prayers

Member Concerns: George Meyer; Maxine Thoreson; Merle Houdek; Karen Schlein; Bob & Joan Loos; Francis Pflibsen; Byron Stadsvold; Lois Rink; Jeanette Erickson, Bonnie Storlie, Marsha Dick; Connie DeLorme, Mike & Sandy Miller

Those Mourning: Family & Friends of Arlysse MacGillivray. May they find God's peace.

Non-Member Friends/Family Concerns: Dan (Gladys Jensen's son) Duane (Renita Miller's brother); Brian Howe (nephew of Marti Howe); Shawn Mahoney (son in law of John & Darlene Kelley); Magnus Svennungsen (Thoreson's great-grandson);Michelle(Katie's friend); Wanita & Frank Groskruetz,(Chris Suby's parents)

Military Concerns: Andrew McCumber; Chris Sikich; Margaret & Catherine Maher; Clark Rose; Ryan Nordstrom; Dan & Kelly Pickett, all our service men and women serving in the Military and all of our veterans who have served.

Global Ministry: Palliative Care Program at Iambi Hospital, Tanzania

Seminary Student: Martha Bec

<i>*Events listed in italics are non church activities, but they are using the building.</i>	
Sunday, Oct. 16 P. Nikki at continuing Ed 9am Virtual Worship 9am Worship 10am Fellowship 10:10am Worship Arts 10:45am Worship <i>5pm Troop 83 in fellowship hall</i>	10:30am Bible Study 6pm Bell Choir 7pm Vocal Choir
Monday, Oct. 17 P. Ben Day off P. Nikki at continuing Ed	Friday, Oct. 21 P. Ben on vaction P. Nikki day off-on call
Tuesday, Oct. 18 9am-3pm Office Open P. Nikki at continuing Ed	Saturday, Oct. 22 P. Ben on vacation P. Nikki on call 9am OSLC Fall Yard Clean-up <i>6pm Sons of Norway in fellowship hall</i>
Wednesday, Oct. 19 9am-3pm Office Open 11am P. Ben at Text Study	Sunday, Oct. 23 9am Virtual Worship 9am Worship 10am Fellowship 10:10am Worship Arts 10:45am Worship <i>1pm Attlesey Birthday Party in Fellowship Hall</i> <i>—All invited</i>
Thursday, Oct. 20 P. Ben on vacation P. Nikki day off-on call 9:15am Faithfully Fit	Monday, Oct. 24 P. Ben day off



OSLC WEEKLY-October 16, 2022

"Welcome one another, therefore, just as Christ has welcomed you, to the glory of God." Romans 15:7

We welcome new visitors and old friends, long-time Lutherans, Christians from every tradition, and people new to faith. To those who have no church home, want to follow Christ, have doubts, do not believe, you are welcome here. Regardless of age, color, culture, sexual orientation, gender identity, socioeconomic status, marital status, abilities or challenges, join us, you are welcome here. You are welcome to worship, to celebrate and sorrow, to rejoice and recover. This is a place where lives are made new.

9:00am Worship, ELW Setting One

PRELUDE

CONFESSION & FORGIVENESS

ELW pg. 94

GATHERING SONG

"Guide Me Ever, Great Redeemer"

ELW 618

KYRIE

ELW pg. 98

SONG OF PRAISE

"This is the Feast"

ELW pg. 101

PRAYER OF THE DAY

ELW pg. 102

ANTHEM

Bell Choir

GOSPEL ACCLAMATION

ELW pg. 102

BIBLE READING

Luke 18:9-14

PROCLAMATION OF THE GOOD NEWS

Pastor Ben Loven

HYMN OF THE DAY

"Love Divine, All Loves Excelling"

ELW 631

CREED

ELW pg. 105

PRAYERS OF INTERCESSION

OFFERTORY

"I Pray"

by Heather Sorenson
Soloist: Kim Pickett

GREAT THANKSGIVING

ELW pg. 107

LORD'S PRAYER

ELW pg. 112

DISTRIBUTION HYMNS

"Lamb of God"

ELW pg. 112-113

"Let us Break Bread Together"

ELW 471

SENDING SONG

"Ask the Complicated Questions"

ACS 1005, pg 2 of Weekly

Ask the Complicated Questions



1 Ask the com - pli - cat - ed ques - tions.
2 Seek the dis - con - cert - ing an - swers,
3 Knock on doors of new i - de - as,
4 For in strug - gle we dis - cov - er



Do not fear to be found out; for our God makes
fol - low where the Spir - it blows; test com - pet - ing
test as - sump - tions long grown stale, for Christ calls from
truth both sim - ple and pro - found; in the knock-ing,



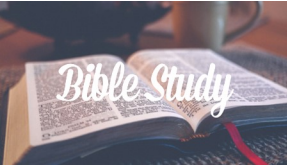
strong our weak-ness, forg - ing faith in fires of doubt.
truths for wis - dom, for in ten - sion new life grows.
shores of won - der, dar - ing us to try and fail.
ask - ing, seek - ing, we are o - pened, an - swered, found.

Text: David Bjorlin, b. 1984
Music: RESTORATION, W. Walker, *Southern Harmony*, 1835
Text © 2018 GIA Publications, Inc., giamusic.com. All rights reserved.

Duplication in any form prohibited without securing permission from copyright administrator or reporting usage under valid license.

QUILTING

Third Tuesday of the month at 9:00am
Fellowship Hall
No sewing skills are needed.
If you can tie a knot, you can help.
Everyone is invited to help out.



PASTOR BEN'S BIBLE STUDY
Thursdays at 10:30AM Fellowship Hall
We will continue working through Acts

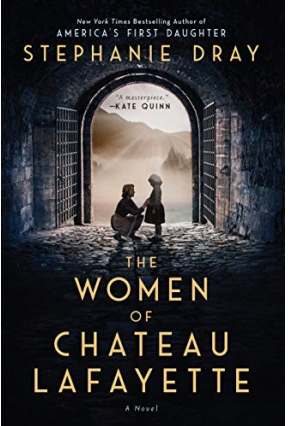


Simply Giving is an
easy way to keep
up on your giving.
There are forms in
the Business
Center on the wall

rack. They can be filled out and left in my box
marked Financial Secretary in the Business
Center, or you can contact me for more
information.
Tim Hornseth, Financial Secretary
507-261-4719 or tjhornseth@charter.net

**MEDIA THAT
MOVES US**

Our media for
November 2 is "The
Women of Chateau
Lafayette" by
Stephanie Dray
We meet at 7pm by
Zoom. If you would
like to join, please
contact Pastor Nikki
for the link.



9th Annual
Good Gifts Gala

Thursday, October 27, 2022 at 6:00pm

Rochester International Event Center,
7333 Airport View Dr SW, Rochester, MN 55902

Evening Events Include:
Music & Social Hour, Food Stations & Dessert,
Program, Exclusive Live Auction, & Grow the Village

\$85 per person - **Please RSVP by October 19, 2022**
Reservations and auction details available at
goodearthvillage.org/gala or 507-346-2494

Sponsors:
Logos for the event's sponsors: FM Community Bank, Our Savior's Lutheran Church, Spring Valley, and Lasker Jewelers.



DID YOU KNOW...

PAST BULLETINS are available on the OSLC website. Click the Worship tab on the home page and then click bulletins.

LEADERSHIP MINUTES are available on the OSLC website. Click the leadership tab on the homepage. There you can find our financial numbers and what Leadership is discussing.

OSLC HAS A PRIVATE FACEBOOK PAGE It's a place for members and those who are active in the life of our congregation to stay up-to-date with events and activities! This is also a place for us to share life-events with our siblings in Christ. Search Our Savior's Lutheran Church, Rochester, MN and ask to join. We also have a public page for all to view.

HEARING DEVICES are available in the sound system area at the back of the Sanctuary. These devices can be used with or without a hearing aid.


OSLC DIRECTORIES can be found in the Business/Mail Room.

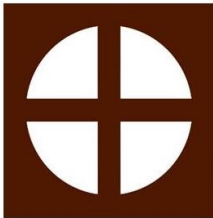
THANK YOU to everyone that donated to the Hope Lodge Collection in September. They are always so grateful for the supplies.

COFFEE FELLOWSHIP


With fall comes new worship opportunities . . . our traditional service at 9:00, coffee fellowship, Worshiping Arts from 10:10 to 10:35 and our 2nd worship service. Parish Fellowship is looking for volunteers to set up coffee before the 1st worship service for members to enjoy after the 1st service has ended. Please use the Sign Up Genius link to help with this much-loved ministry. <https://www.signupgenius.com/go/10C0B49AEAC29A0F94-coffee> This link can be found on the OSLC homepage.

We're trying something new in that we'll be serving coffee through the kitchen doors that open up into the hallway between the kitchen and fellowship hall. This will make it much easier than loading everything onto the carts and bringing it in to the fellowship hall! Cleanup, as well, will then be a little more streamlined. Directions available in the kitchen or through the church office.





Our Savior's Lutheran Church
2124 Viola Rd NE
Rochester, MN 55906
www.rochesteroslc.org



Evangelical Lutheran Church in America
God's work. Our hands.

OFFICE HOURS & CONTACT INFORMATION

The office is open Tuesday, Wednesday & Thursday, 9:00am to 3pm
Joanne is working from home on Mondays and Fridays, available by email.

Office—289-3021; **Website:** www.rochesteroslc.org
Pastor Ben Loven—bloven@rochesteroslc.org; cell 701-580-1559
Pastor Nikki Rockne—pnikki@rochesteroslc.org cell 507-398-7710

Our office doors are always open for visits/conversations. Please make a call to the church office before visiting if you would like to specifically visit with one of us to ensure we are in.
Pastor Ben & Pastor Nikki

Joanne Hamilton, Office—office@rochesteroslc.org
Greg Henderson, Director of Music—music@rochesteroslc.org
Carole Joyce, Family Ministry Consultant—carole35@charter.net
Katie Zahasky, Prayer Chain—254-7894 or ktzahasky4@gmail.com

WORSHIP ASSISTANTS

Organist/Pianist: Greg Henderson
Sound Board Engineer: 9:00am Worship—Tim Pickett 10:45am David Flynn
Offering Counters: Tim & Jean Hornseth
Ushers: 9:00am Worship—Wanda Hagquist, Todd McCumber
Communion Assistant: 9:00am Worship—Mary Ann Smith
Altar Guild Member: Diana Schroder
Special Music: OSLC Bell Choir, directed by Bev Gronvold
 Offertory: “I Pray” by Heather Sorenson—OSLC Choir, directed by Greg Henderson
 Soloist: Kim Pickett



Scan the QR code for easy giving.

ALTAR FLOWERS TODAY are given to the glory of God in honor from
Craig & Diana Martens

2022 Calendar is posted on the large bulletin board

You can sign up on the large bulletin board, email Joanne or by calling the office. Cost is \$40 and checks can be made to OSLC with Altar Flowers in the memo and can be left in the offering plate or dropped off at the office. Weekly deadline to sign up is Wednesday noon to make printing.



FLOWER SCHEDULE

Oct. 23—Smith

Oct. 30—Servais

Nov. 6—Fredriksen

OSLC MUSIC

Orchestra 10am on
scheduled Sundays

Bell Choir Thursdays at 6pm

Vocal Choir Thursdays at 7pm

If you have any questions regarding music here at OSLC, contact our Director of Music, Greg Henderson at music@rochesterosl.org or 505-975-1425



**CHURCHILL/HOOVER
Snack & Food Shelf
Ministry**

The most wanted items are Peanut Butter/Jelly, microwave mac & cheese, oatmeal, microwave or stove top packets, ramen, rice, cereal, fruit cups. Items can be left in the blue barrel along with the classroom snacks.

WOMEN'S BIBLE STUDY

Naomi Circle—Nov. 14, 9am

Hostess: Megan Valen

Bible Study: Mary Ann Smith

Priscilla Circle—Nov. 9, 9:30am at OSLC

Hostess: Julie Mullen

Bible Study: Group

Sarah Circle—Oct. 17, 1pm



LEADERSHIP LISTENS

Would you like an opportunity to meet with the Leadership Team? Then you're in luck!

The Leadership Team has set up two times where they will be available to chat: Wednesday October 26, from 7-8pm, and Sunday, October 30, from 1-2pm. Both will be held in the Fellowship Hall.

They'd love for you to stop by and share!



October 30

Everyone is invited to patriciate. No sign up necessary to participate. Just show up and have fun. We will be meeting in the OSLC parking lot from 2-3pm. Yard games will also be part of the fun.

Crafting at OSLC

Calling all crafters! Do you scrapbook, quilt, knit, draw, sculpt, whittle, or do other crafty things? Join us on the first Saturday morning of every month, from 9-11 AM, in the Fellowship Hall. Bring your own supplies for your craft and gather with some other crafters to work on your projects and enjoy some fellowship. This is not meant to be a class, just a time to work on individual projects with members of your church family. Hope to see you there! The next gathering is on **November 5**.



Youth News

The **weekend mission trip** will be December 3-4. We will leave church at 7:15 Saturday morning and be back about 1 on Sunday afternoon. We will serve at three places, dine and worship together! I am very excited for the new opportunities this year! It is always neat to see the different places we can serve The Lord and learn about others. At this time, it is open to all high school youth. This event will be free to the youth. See Cassie for more details and to sign up.

FAITHFULLY FIT

The Thursday morning exercise group will begin to meet again on September 8 at 9:15am in the Narthex. Join us for light exercise and joyful conversation. Everyone is welcome to join in the fun.

FALL YARD CLEAN UP

Join the Property Team in cleaning up the church grounds on October 22 at 9:00am. Bring your favorite rake, hedge trimmer, etc. Let's get things looking great here. Questions? Contact Al Picket or Megan Valen



**YOU'RE INVITED TO
CELEBRATE**

Mary Ann Smith would like to invite the congregation to an Open House for my Mom's 100th birthday (Wanda Attlesley). This will be held at church Oct. 23 2-4 pm.



FOR YOUTH IN GRADES 6-12

FOOD-N-CHAT (formerly LIFT)

We invite youth and caring adults to gather the 1st Sunday of every month for food and conversations. Exploring and growing in our faith life together. Plan for about an hour of time. starting at noon. Please RSVP so we know how much food to order.

Thanks much. See you Sunday
Pastor Ben and Pastor Nikki

