

Remember in your Prayers

Member Concerns: Shirley Thomann; Sharon Peterson; Greg Henderson; Wanda Attlesey; Marti Howe; Terry Wagner; Ed Harbeck; Gordon & Lois Riekmann; Bonnie Storlie; George Meyer; Merle Houdek; Karen Schlein; Bob Loos; Connie DeLorme, Mike & Sandy Miller

Those Mourning: Francis Pflibsen family upon his death. Funeral is April 12, 11:00am at OSLC

Non-Member Friends/Family Concerns: June Duebbert (Jodie Westland’s mother); Melissa (cousin of Mary Ann Smith); Tom Harmon (Warren’s father); Glenn Riekmann (son of Gordon & Lois); Mary Johnson; Chris Wilson (son in law of Everett and Vickie Schulz); Lori (George Meyer's cousin); Magnus Svennungsen (Thoreson family member)

Military Concerns: Brooks Rohe; Andrew McCumber; Chris Sikich; Margaret & Catherine Maher; Ryan Nordstrom; Dan & Kelly Pickett, all our service men and women serving in the Military and all of our veterans who have served.

Global Ministry: Palliative Care Program at Iambi Hospital, Tanzania



April 6, 2025
Our Savior’s Lutheran Church
WELCOME TO WORSHIP
5 Lent

All Creation Sings, Setting 12

PRESIDING Pastor Ben Loven

GATHERING SONG *As the Sun with Longer Journey* ELW 329

SCRIPTURE READING John 12:1-8

¹Six days before the Passover Jesus came to Bethany, the home of Lazarus, whom he had raised from the dead. ²There they gave a dinner for him. Martha served, and Lazarus was one of those at the table with him. ³Mary took a pound of costly perfume made of pure nard, anointed Jesus' feet, and wiped them with her hair. The house was filled with the fragrance of the perfume. ⁴But Judas Iscariot, one of his disciples (the one who was about to betray him), said, ⁵Why was this perfume not sold for three hundred denarii and the money given to the poor? ⁶(He said this not because he cared about the poor, but because he was a thief; he kept the common purse and used to steal what was put into it.) ⁷Jesus said, "Leave her alone. She bought it so that she might keep it for the day of my burial. ⁸You always have the poor with you, but you do not always have me."

SERMON Katie Zahasky

SONG OF THE DAY *Let us Ever Walk with Jesus* ELW 802

COMMUNION SONGS *In the Singing* ELW 466
As We Gather at Your Table ELW 522

SENDING SONG *God’s Work, Our Hands* ACS 1000
pg. 2 of Weekly

Sunday, April 6
9am Worship
10am Fellowship
10am Media That Moves Us
10am Orchestra Rehearsal
5pm Funky Bunch

Monday, April 7
P. Ben day off
6:30pm Women’s Board

Tuesday, April 8
9am office open
9am P. Ben at Zumbro River Conference
6pm Leadership Team

Wednesday, April 9
9am Office open
9:30am Priscilla Circle
10am Martha Circle
5:15pm Grace Bells

5:30pm Lenten Meal
6:30pm Lenten Worship

Thursday, April 10
9am Office open
9:15am Faithfully Fit

10:30am Bible Study
Friday, April 11
Saturday, April 12
9:30am-11am Francis Pflibsen visitation
11am Francis Pflibsen Funeral

Sunday, April 13-Palm/Passion Sunday
9am Worship
Sunday School
10am Fellowship

Monday, April 14
P. Ben day off
9am Naomi Circle

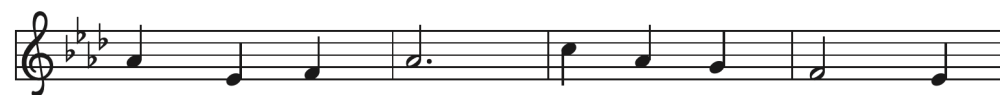
Tuesday, April 15
9am Office open
9am Quilting
1pm Sarah Circle

Wednesday, April 16
9am Office open

Non-Church Building Use
M, T, TH—Cello Lessons 2:30pm-8:30pm—Music Room
April 10-Den 83-6:30pm-Classroom
Sons of Norway-6:30pm-Fellowship Hall
April 13-Troop 83-5pm-Fellowship Hall

SENDING SONG

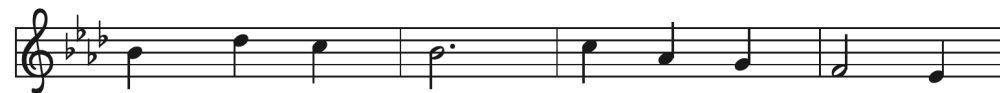
God's Work, Our Hands



1 God's work, our hands: work - ing to - geth - er,
 2 God's work, our feet: trav - 'ling to - geth - er,
 3 God's work, our voice: sing - ing to - geth - er,
 4 God is at work in and a - round us:



build - ing a fu - ture, re - pair - ing the world,
 fol - low - ing Je - sus to plac - es un - known,
 prais - ing, pro - claim - ing to all who will hear,
 seed - lings are sprout - ing and bread's on the rise!



rais - ing up homes, plant - ing new gar - dens,
 walk - ing as friends, march - ing for free - dom,
 pray - ing for peace, shout - ing for jus - tice,
 Washed and set free, hum - bled and hon - ored,



feed - ing the hun - gry and shelt - 'ring the cold.
 run - ning the race with God's fu - ture the goal.
 claim - ing God's love for the lost and the least.
 gift - ed by grace, we re - spond in God's love.



Bless, God, our hands as we work in your name,
 Bless, God, our feet as we fol - low your way,
 Bless, God, our voice as we speak in your name,
 Bless, God, our lives as we an - swer your call,



shar - ing the good news of your gos - pel.
 shar - ing the good news of your gos - pel.
 shar - ing the good news of your gos - pel.
 shar - ing the good news of your gos - pel.

MEDIA THAT MOVES US

PODCASTS
THAT SOUNDS FUN
 WITH ANNIE F. DOWNS
 WINTER

Episodes 861, 867, and 869, 961, 964
 April 6th discussion after worship.

BOOK
UNORTHODOX
 THE SCANDALOUS REJECTION OF MY HASIDIC ROOTS
 DEBORAH FELDMAN

May 4th discussion after worship

MOVIE
THE FORGE
 DVD • DIGITAL
 FROM THE CREATORS OF 'MILK AND HONEY' AND 'COLETTA' IN COLLABORATION WITH 100% FILM
 'ENTERTAINS AND INSPIRES! A MUST-SEE!'

June 1st discussion after worship

LENTEN OFFERINGS
 The Lenten offering this season will be going to

MUSIC AT OSLC—Wednesday Nights

Grace Bells rehearsing at 6pm with Bev Gronvold directing.
 Vocal Choir rehearsing at 7pm with Greg Henderson directing.

We invite all to come and give it a try.

FAITHFULLY FIT

The Thursday morning exercise group meets at 9:15am in the Narthex. Join us for light exercise and joyful conversation. Everyone is welcome to join in the fun.

PRAYER CONCERNS

Please check out the prayer concerns on the back page of the weekly. If your family member can be removed, please let the office know by calling 507-289-3021 or e-mailing office@rochesterosl.org.

We love taking people off of the list because they are doing better, but know they are welcome to remain on the list.

Joanne, OSLC Office

CHURCHILL/HOOVER SCHOOLS are looking for donations. Listed below are the items they are looking for. Please leave in the blue barrel in the Narthex.

- Snacks
- Granola bars - crackers - mini muffins- cereal - goldfish - GoGo squeez applesauce etc.
- Sandwich bags for snacks could also be helpful to divide food up if it's in larger boxes or containers instead of individualized bags.
- 4T & 5T Pull ups



**URGENTLY NEEDED—NOT FILLED YET
Offering Counter**

It's an 8 week rotation so you only count every 8 weeks. If you can help contact Tim Hornseth at tjhornseth@charter.net or 507-261-4719

BIBLE STUDY WITH PASTOR BEN

Thursdays at 10:30AM (Water Room), If you've ever felt like you wished you knew more about the Bible, but were anxious that you didn't know enough, this is the Bible Study for you! There's no homework, you don't have to be an "expert" to participate, and everyone there cares about each other. We're going to be working our way through the Gospel of John. Come join in the conversation!

OSLC YOUTH Thank you for your support of youth ministry!! This continues on through college. The youth send care letters (on behalf of the congregation) with gift cards to a local eatery/coffee shop to the kids who's addresses we get. This year we sent six \$10 cards! The youth enjoy the greeting and prayers and definitely the free money for someplace fun for a nice study break! Thank you for making this possible!! Please hold these youth in prayer as they are finishing out their college year!

Martha Circle

April 9—10:00am
Hostess: Carol Houdek
Bible Study: **Group**
Location: OSLC

Naomi Circle

April 14—9:00am
Hostess: Mary Ann Smith
Bible Study: Mary Ann Smith

Priscilla Circle

April 9—9:30am
Hostess: Ardie O'Hanlon
Bible Study: Diana Schroeder
Kathy Norby

Sarah Circle

3rd Tuesday of the month —1:00pm
Hostess:
Bible Study:



We welcome new visitors and old friends, long-time Lutherans, Christians from every tradition, and people new to faith. To those who have no church home, want to follow Christ, have doubts, do not believe, you are welcome here. Regardless of age, color, culture, sexual orientation, gender identity, socioeconomic status, marital status, abilities or challenges, join us, you are welcome here. You are welcome to worship, to celebrate and sorrow, to rejoice and recover. This is a place where lives are made new.

The office is open Tuesday, Wednesday & Thursday, 9:00am to 3pm

Office—289-3021; **Website:** www.rochesterosl.org

Pastor Ben Loven—bloven@rochesterosl.org; cell 701-580-1559

My office door is always open for visits/conversations. Please make a call to the church office before visiting if you would like to specifically visit with me to ensure I am in. Pastor Ben

Joanne Hamilton, Office—office@rochesterosl.org

Greg Henderson, Director of Music—music@rochesterosl.org

Katie Zahasky, Prayer Chain—507-254-7894 or ktzahasky4@gmail.com

WORSHIP ASSISTANTS 9:00am Worship

Organist: Greg Henderson, **Pianist:** Jan Matson

Sound Board Engineer: Sherry Rengstorf

Offering Counters: Glenn Leckband, Chris Suby

Ushers: Jon & Julie Alleckson Family

Communion Assistant/Offering Assistant: Jodie Westland

Altar Guild: Darlene Kelley

Fellowship: Tim & Jean Hornseth



Our Savior's Lutheran Church
2124 Viola Rd NE
Rochester, MN 55906
www.rochesterosl.org

Evangelical Lutheran Church in America
God's work. Our hands.

Altar Flowers today are given to the Glory of God from OSLC

April 13—OPEN April 20—OPEN April 27—Flynn May 4—OPEN

Please consider signing up to give flowers. Cost is \$40 and they are yours to take home after worship. Please remember to return the vase as our pricing is based on that.

Treasurer's Report:

Income YTD (as of 02/28/2025): \$63,934.81

Expenses YTD (as of 02/28/2025): \$83,497.75*

Budgeted Expenses: \$64,038.44

*Expenses include the remaining \$23,810 for the roof repair completed in '24.



Scan
for easy
giving!

Lenten SOUP Suppers

OUR WEDNESDAY NIGHT SOUP SUPPER before Lenten worship begins March 12. We'll be serving between 5:30 and 6:15. Below is a listing of soups served each evening. We hope you'll join us!

Wednesday, April 9

Chicken Dumpling
Tomato (gluten free)

Maundy Thursday, April 17

Bean and Ham (gluten free)
Bacon Corn Chowder



MARCH/APRIL CONGREGATIONAL COLLECTION

Personal Care Kits

Cleanliness may not actually be next to godliness, but it certainly helps a person feel more human. When families find their homes destroyed, or must flee for their safety, soap and a towel rarely make the cut for what they can carry. Arriving in a refugee camp or other place of safety, they are scared, vulnerable and dirty from the travel. The simple items included in a Personal Care Kit provide much-needed self care, critical germ fighting supplies and the chance for our neighbors in need to regain dignity amidst fear and uncertainty.

Each kit includes:

- 1 light weight bath sized towel (dark color recommended)
- 2 bath-size bars of soap (equaling 8 to 9 oz) in original wrapping,
- 1 adult-size toothbrush in original packaging 1 study comb
- 1 metal nail clipper.

Please place all items in the basket in the Narthex. Thank you.

BREAKFAST & EGG HUNT

Join the Youth for Breakfast after Worship
Pastries, Fruit & Juice

After Breakfast Join Us For the Easter Egg Hunt

Sunday, April 27

Donations of candy are needed for the egg hunt. Please leave your donation in the empty Pastor's office on the desk.

HOLY WEEK

LOVE TRIUMPHS DEATH

Palm Sunday
April 13, 9:00am Worship

Maundy Thursday
April 17, 6:00pm Meal/Worship

Good Friday
April 18, 6:30pm Worship

Easter Sunday
April 20, 9am Worship

ORDER EASTER PLANTS

We will be getting a variety of Begonias & Cyclamens.

Cost is \$20/plant.

Forms are available on the Narthex Counter or in the church office. Please make your check out to OSLC with Easter Plant in the memo. Put your form/money in the offering plate or leave on Joanne's desk in the office.

Deadline to order is April 13

